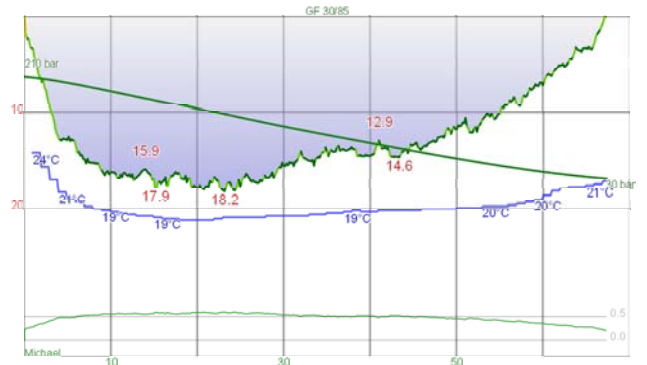


Dive #3401 - Sat, Jan 5, 2013 9:29  
Australia NSW Sydney Bare Island  
Max depth: 18.4 m  
Duration: 59 min

Cylinder	Gasmix	Gas Used	SAC	Weight System
	air	1443.2 l	10.5 l/min	Total Weight: 0.0 kg
	EAN26	0 bar	Max. CNS 7	
	EAN31	0 bar	OTU 4	
	EAN49	0 bar		

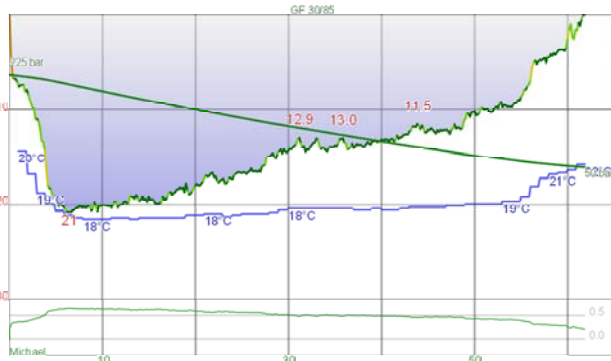
Comment: Computer Settings: ZH-L16 GF OC 30% / 85%  
First dive of the year and first for 3 weeks!! Went off W point and SW to wall. Saw at least 13 PPHs, some nudibranchs I have never seen before (Hedgpeths polycera and ?), lots of fish. Very warm shallow (23C) but a bit dirty and even 19.5C deep. Good start to the year. Visibility good.



Dive #3402 - Sat, Jan 5, 2013 11:52  
Australia NSW Sydney Bare Island  
Max depth: 18.2 m  
Duration: 67 min

Cylinder	Gasmix	Gas Used	SAC	Weight System
	air	1528.1 l	9.9 l/min	Total Weight: 0.0 kg
	EAN26	0 bar	Max. CNS 7	
	EAN31	0 bar	OTU 6	
	EAN49	0 bar		

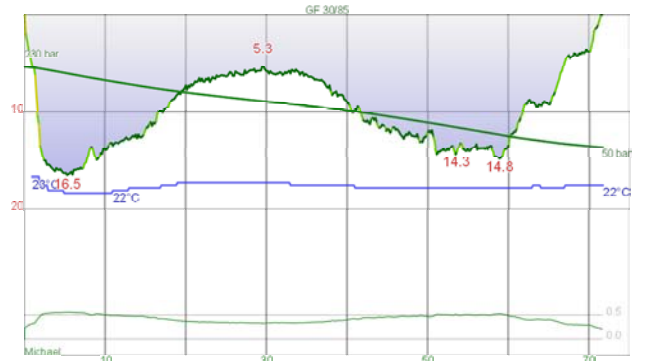
Comment: Computer Settings: ZH-L16 GF OC 30% / 85%  
Went off W point and to W. Then on S side of IR1. On IR2 found 2 juvenile sea dragons, most I have seen for a couple of years at BI I think. Really clear how much rock has been moved by the seas at the end of the reef. Lots of new anchors as well. Kelly found 5 pink okenias at the end of the reef. We found 14 PPHs, of which only 6 were ones we saw on the first dive. Again, another nice dive. Visibility good.



Dive #3403 - Sun, Jan 6, 2013 10:48  
Australia NSW Sydney The Leap  
Max depth: 21 m  
Duration: 62 min

Cylinder	Gasmix	Gas Used	SAC	Weight System
	air	1485.7 l	9.7 l/min	Total Weight: 0.0 kg
	EAN26	0 bar	Max. CNS 4	
	EAN31	0 bar	OTU 8	
	EAN49	0 bar		

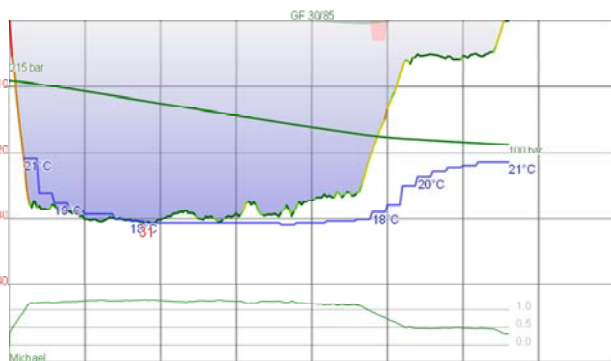
Dive type: Drift dive  
Comment: Computer Settings: ZH-L16 GF OC 30% / 85%  
Latish dive this morning due to the need to wait till after low tide. Dirty and warm on top but cleaner (10 m) on bottom. However, water 2 degrees colder than yesterday at 17. something. Found 7 PPHs near the start and Kelly found a big belly sea horse. Lots of nudis, including a couple we do not see often (sulphur Noumea and veiny okenia). Drifted along at a nice ...



Dive #3404 - Thu, Jan 10, 2013 20:03  
Australia NSW Sydney Shiprock  
Max depth: 16.6 m  
Duration: 72 min

Cylinder	Gasmix	Gas Used	SAC	Weight System
	air	1403.8 l	9.4 l/min	Total Weight: 0.0 kg
	EAN26	0 bar	Max. CNS 12	
	EAN31	0 bar	OTU 1	
	EAN49	0 bar		

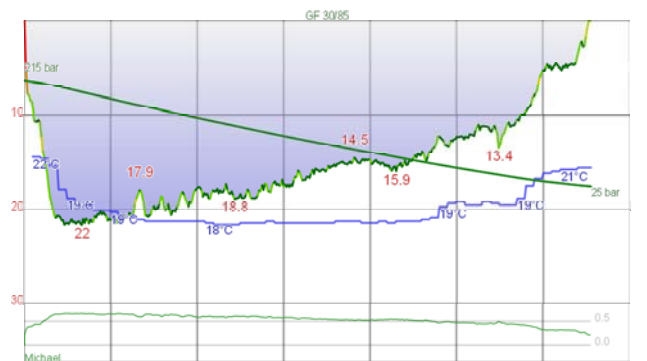
Dive activity: Drift dive  
Dive type: Night dive  
Comment: Computer Settings: ZH-L16 GF OC 30% / 85%  
Club night dive, 13 attending. Very dirty but very warm (22.1C min). Viz mostly 3-4 m but some better spots. Things seen tonight included 7 pineapplefish, two firefish, lots of squid, octopus and moray eels, heaps of sand whiting, including a few l...



Dive #3405 - Sat, Jan 12, 2013 8:19  
Australia North Linta Strait Sydney  
Max depth: 31 m  
Duration: 33 min

Cylinder	Gasmix	Gas Used	SAC	Weight System
	EAN31	1271.5 l	11.5 l/min	unknown Total Weight: 8.0 kg
	EAN26	0 bar	Max. CNS 12	
	EAN31	0 bar	OTU 36	
	EAN49	0 bar		

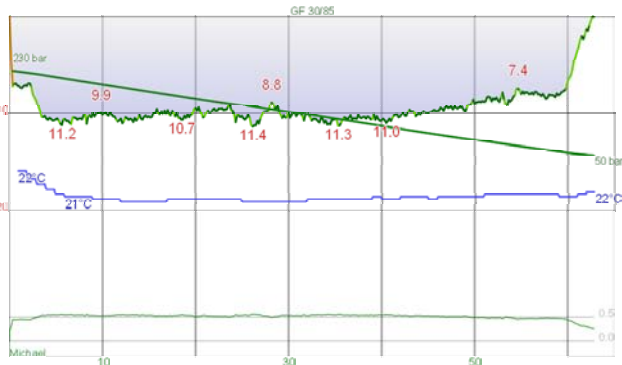
Comment: Computer Settings: ZH-L16 GF OC 30% / 85%  
A bit dirtier on top but clean on bottom (cold 17.3C). Found that where I dived the first time was a little shallower than the second dive. We did both spots today. Saw 2 sea dragons, Kelly found 2 PPH. Also saw a blue devilfish and lots of silver sweep and one-spot pullers. Very nice dive. Visibility good.



Dive #3406 - Sun, Jan 13, 2013 8:46  
Australia NSW Sydney The Leap  
Max depth: 22 m  
Duration: 66 min

Cylinder	Gasmix	Gas Used	SAC	Weight System
	air	1613.0 l	9.6 l/min	Total Weight: 0.0 kg
	EAN26	0 bar	Max. CNS 6	
	EAN31	0 bar	OTU 12	
	EAN49	0 bar		

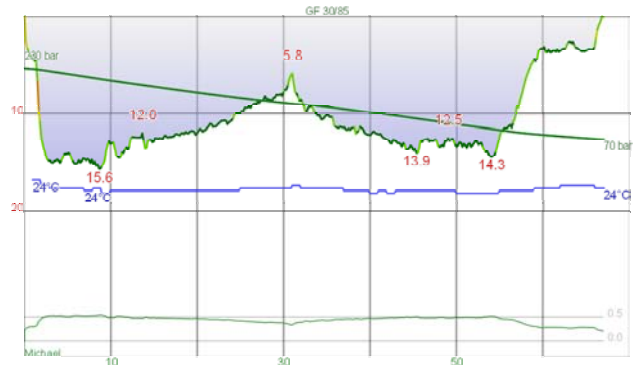
Dive type: Drift dive  
Comment: Computer Settings: ZH-L16 GF OC 30% / 85%  
Ten members ended up diving here. Huge 2 m tide, but the current was not all that strong. Saw 6 PPHs, 2 sea dragons, 1 with eggs, 3 sea horses (where we saw 1 last week). Lots of divers here. Cold again on bottom (17) but nice up shallow. A few rare nudibranchs, including veiny okenia and one I cannot yet identify. A very good dive. Visibility good.



Dive #3407 - Thu, Jan 17, 2013 19:59  
Australia NSW Sydney Bare Island Left  
Max depth: 11.4 m  
Duration: 63 min

Cylinder	Gasmix	Gas Used	SAC	Weight System
	air	10.9 l/min	10.9 l/min	Total Weight: 0.0 kg
		Max. CNS	1	
		OTU	0	

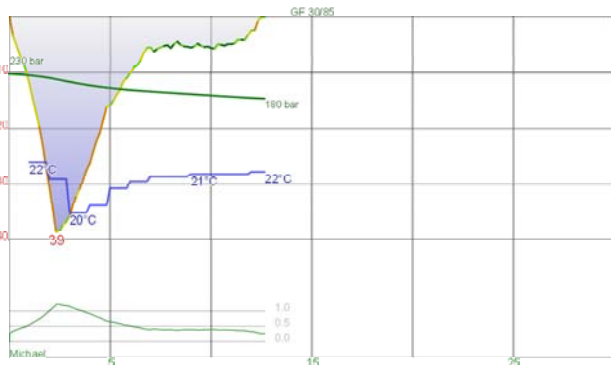
Diveactivity: Drift dive  
DiveType: Night dive  
Comment: Computer Settings: ZH-L16 GF OC 30% / 85%  
Club night dive, 12 attending. Low tide so went off back left SE to sand. Then S till 20 mins and back to shore. Viz not too bad out back but only 3-4 m nearer to bridge. Found 2 PPHs as soon as hit the sand. Also a Vercos tamja. Gary P found 3 P...



Dive #3408 - Sat, Jan 19, 2013 9:00  
Australia NSW Sydney Shiprock  
Max depth: 16.0 m  
Duration: 67 min

Cylinder	Gasmix	Gas Used	SAC	Weight System
	air	1247.8 l	8.5 l/min	Total Weight: 0.0 kg
	EAN26	0 bar	Max. CNS	1
	EAN31	0 bar	OTU	1
	EAN49	0 bar		

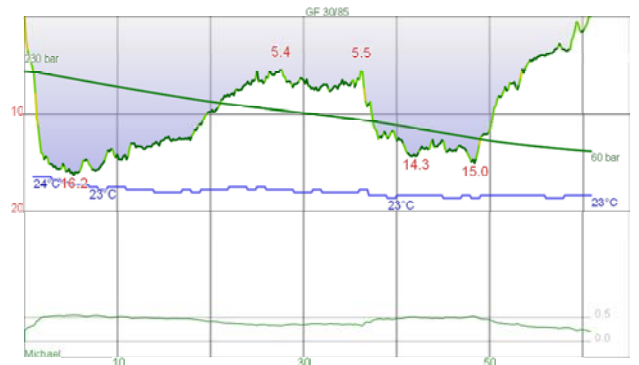
DiveType: Drift dive  
Comment: Computer Settings: ZH-L16 GF OC 30% / 85%  
Cancelled boat dive due to big S change last night. Low tide, but virtually no current. Could not find the anglerfish that people saw last weekend. Lots of octopus, numbrays and a few small cuttlefish. A big school of yellowtail. The plaque is almost unreadable, need to take down a brush to clean out the letters. 7 pineapplefish, but I did not see a single nudibranch...



Dive #3409 - Sun, Jan 20, 2013 8:31  
Australia NSW Sydney SS Tuggerah  
Max depth: 39 m  
Duration: 13 min

Cylinder	Gasmix	Gas Used	SAC	Weight System
	air	602.2 l	17.2 l/min	unknown
	EAN25	0 bar	Max. CNS	2
	EAN31	0 bar	OTU	4
	EAN49	0 bar		

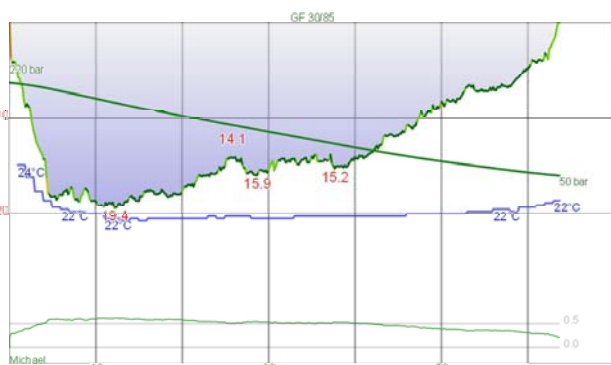
Comment: Computer Settings: ZH-L16 GF OC 30% / 85%  
Went out on charter boat. Took 4 goes to anchor. Phil and Derek went down to secure anchor but as we hit 30 m, the anchor came free. We got to 40 m and saw that it was not hooked in. Ascended. Bugger, visibility was brilliant. That was it for the day for us. Visibility excellent.



Dive #3410 - Thu, Jan 24, 2013 19:38  
Australia NSW Sydney Shiprock  
Max depth: 16.2 m  
Duration: 61 min

Cylinder	Gasmix	Gas Used	SAC	Weight System
	air	1325.8 l	10.4 l/min	Total Weight: 0.0 kg
	EAN25	0 bar	Max. CNS	5
	EAN31	0 bar	OTU	1
	EAN49	0 bar		

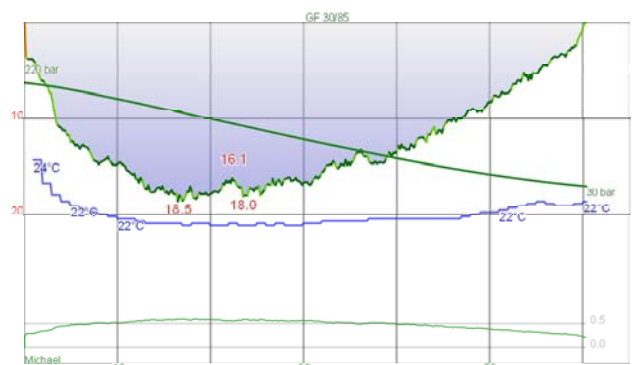
Diveactivity: Drift dive  
DiveType: Night dive  
Comment: Computer Settings: ZH-L16 GF OC 30% / 85%  
Club night dive, 19 members attended - a record. Also a record I reckon for Shiprock as at least another 40 divers here from 2 shops. Got in very early (25 mins) to miss the hoardes, lowish high tide so current was very mild. Did not encounter them ...



Dive #3411 - Sat, Jan 26, 2013 8:09  
Australia NSW Sydney Bare Island  
Max depth: 19.4 m  
Duration: 64 min

Cylinder	Gasmix	Gas Used	SAC	Weight System
	air	1443.2 l	9.6 l/min	Total Weight: 0.0 kg
	EAN25	0 bar	Max. CNS	7
	EAN31	0 bar	OTU	7
	EAN49	0 bar		

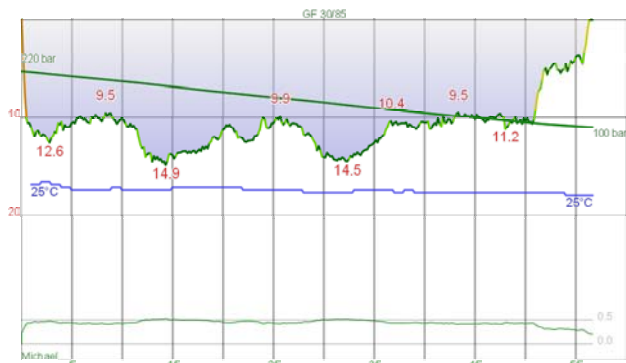
DiveType: Drift dive  
Comment: Computer Settings: ZH-L16 GF OC 30% / 85%  
Club dive, 29 attending. Eddy dived with us, our 349th dive together but first in over 4 years with him. Went SW of W point, then S and back N. Kelly found 3 PPH out here. Quite clear, 12 m or more. Back to shore normal way. I found 2 more PPH shallower. Kelly saw a squid eating an old wife. Also a dwarf firefish. Visibility good.



Dive #3412 - Sat, Jan 26, 2013 10:49  
Australia NSW Sydney Bare Island  
Max depth: 18.6 m  
Duration: 60 min

Cylinder	Gasmix	Gas Used	SAC	Weight System
	air	1613.0 l	11.6 l/min	Total Weight: 0.0 kg
	EAN25	0 bar	Max. CNS	7
	EAN31	0 bar	OTU	6
	EAN49	0 bar		

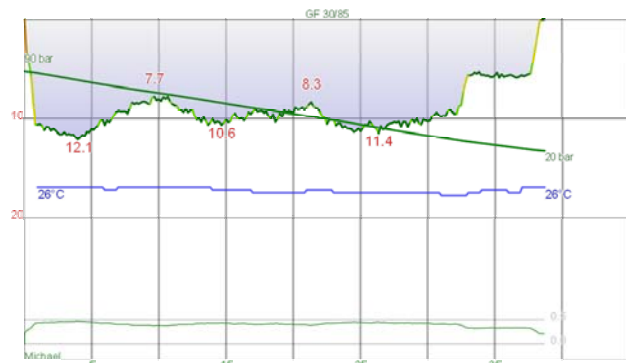
DiveType: Drift dive  
Comment: Computer Settings: ZH-L16 GF OC 30% / 85%  
Second club dive. Went off W point and W to sand and then W to IR1 on the N side. Slight outgoing current, easy to swim against. Lots of things seen, including 2 sea dragons on S side of IR2, a RIF on the SE corner of IR2 and the same PPHs we saw at end of first dive. Visibility even better, very good.



Dive #3413 - Sat, Feb 9, 2013 8:33  
Australia NSW Byron Bay The Nursery

Cylinder	Gasmix	Gas Used	SAC	Weight System
	air	1326.8 l	10.7 l/min	Total Weight: 0.0 kg
	EAN25	0 bar	Max. CNS 1	
	EAN31	0 bar	OTU 0	
	EAN49	0 bar		

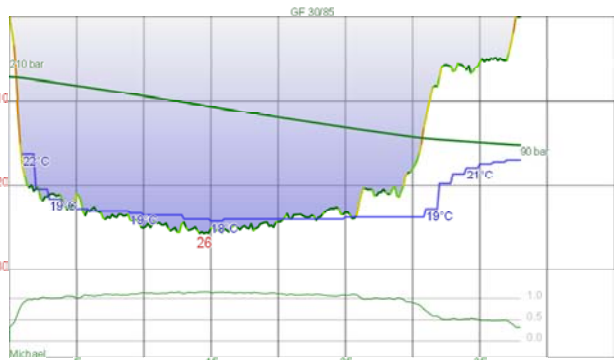
Comment: Computer Settings: ZH-L16 GF OC 30% / 85%  
First dive for 2 weeks due to horrendous weather. Quite dirty but warm (25C). Lost Shaun within five mins. Kelly and I just did loops around the mooring. I saw a leopard shark. Saw a few eels, a nice shrimp, a school of barracuda and lots of other fish. Bottom stripped of growth because of the huge seas. Not so great dive. Visibility poor.



Dive #3414 - Sun, Feb 10, 2013 8:16  
Australia NSW Byron Bay The Nursery

Cylinder	Gasmix	Gas Used	SAC	Weight System
	air	773.9 l	10.6 l/min	Total Weight: 0.0 kg
	EAN25	0 bar	Max. CNS 12	
	EAN31	0 bar	OTU 0	
	EAN49	0 bar		

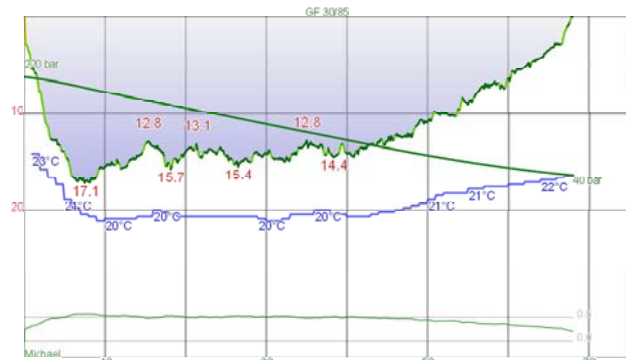
Comment: Computer Settings: ZH-L16 GF OC 30% / 85%  
Even dirtier today than yesterday. I had a problem with occy before dive and neglected to check tank contents. Had only 90 bar or so! Stayed very close to mooring. Saw at least 2 and maybe 3 leopard sharks (Kelly saw as well today). Lots of fish around. Not a great dive. Visibility very poor.



Dive #3415 - Sat, Feb 16, 2013 8:26  
Australia NSW Sydney Barrens Hut/ The Split

Cylinder	Gasmix	Gas Used	SAC	Weight System
	EAN32	1326.8 l	11.6 l/min	unknown 8.0 kg
	EAN25	0 bar	Max. CNS 12	Total Weight: 8.0 kg
	EAN32	0 bar	OTU 38	
	EAN49	0 bar		

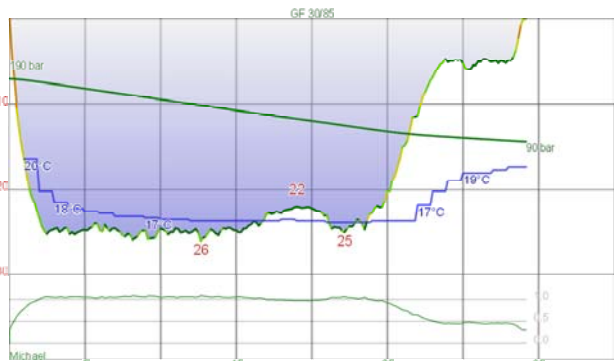
Comment: Computer Settings: ZH-L16 GF OC 30% / 85%  
Club boat dive. First time I have been able to take boat out for over 4 weeks. Was about 12-15 kts SW blowing when we got there but this dropped to less than 10 kts when we were in water. Slight current from N on top. Did The Split and then on way back found a donut nembrotha. Found a fishing trap which had sharks, cuttlefish, bream and old wives in it. All undersized. Opened it and set free. Back to cave and then up. Lots of silver sweep and yellowtail in spots. Viz better shallow...



Dive #3416 - Sun, Feb 17, 2013 9:43  
Australia NSW Sydney Bare Island Deep Wall

Cylinder	Gasmix	Gas Used	SAC	Weight System
	air	1528.1 l	10.0 l/min	Total Weight: 0.0 kg
	EAN25	0 bar	Max. CNS 9	
	EAN32	0 bar	OTU 3	
	EAN49	0 bar		

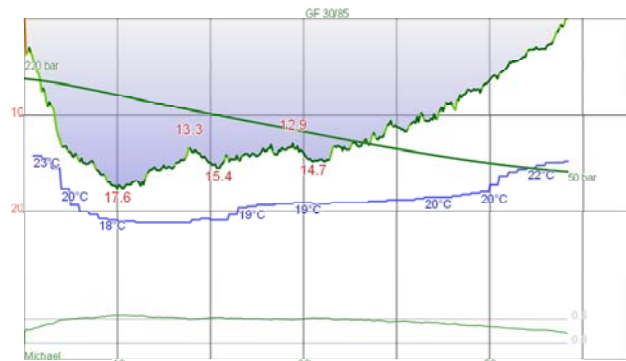
Divetype: Drift dive  
Comment: Computer Settings: ZH-L16 GF OC 30% / 85%  
Went in off W point and went to the W. Once at sand, decided to keep going W and ended up at 16 m. Turned right. Found RIF on RIF Reef. Then to 15 m Reef (another RIF) and IR1. Back towards exit. Kelly found a few PPH opposite cave. I found another at 8 m. Some big flathead, octopus, squid and more. A very nice dive. Visibility poor.



Dive #3417 - Wed, Feb 20, 2013 8:40  
Australia NSW Sydney Pizza Reef

Cylinder	Gasmix	Gas Used	SAC	Weight System
	EAN30	1105.6 l	11.1 l/min	unknown 8.0 kg
	EAN24	0 bar	Max. CNS 9	Total Weight: 8.0 kg
	EAN30	0 bar	OTU 30	
	EAN49	0 bar		

Comment: Computer Settings: ZH-L16 GF OC 30% / 85%



Dive #3418 - Thu, Feb 21, 2013 19:51  
Australia NSW Sydney Bare Island RIF Reef

Cylinder	Gasmix	Gas Used	SAC	Weight System
	air	1443.2 l	11.1 l/min	Total Weight: 0.0 kg
	EAN24	0 bar	Max. CNS 3	
	EAN30	0 bar	OTU 3	
	EAN49	0 bar		

Divetype: Drift dive  
Divetype: Night dive  
Comment: Computer Settings: ZH-L16 GF OC 30% / 85%  
Club night dive. Only 4 divers. A bit of timing needed to get in but was okay. Meant to go SW but ended up going W. Discovered my compass is RS, the "glass" was broken. Ended up at RIF Reef went over and around it and then across again...